

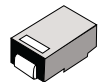
**Surface Mount  
High Efficiency Power Rectifiers**

Ideally suited for high voltage, high frequency rectification, or as free wheeling and protection diodes in surface mount applications where compact size and weight are critical to the system.

- \* Low Power Loss, High efficiency
- \* Glass Passivated chips junction
- \* 150 °C Operating Junction Temperature
- \* Low Stored Charge Majority Carrier Conduction
- \* Low Forward Voltage Drop , High Current Capability
- \* High-Switching Speed 50 & 75 Nanosecond Recovery Time
- \* Small Compact Surface Mountable Package with J-Bend Lead
- \* Plastic Material used Carries Underwriters Laboratory Flammability Classification 94V-O

**HIGH EFFICIENCY  
RECTIFIERS**

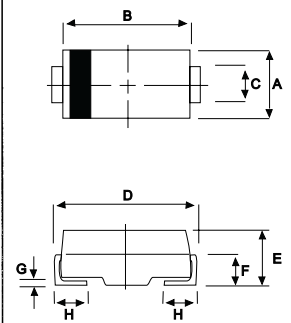
**1.0 AMPERES  
50 -- 400 VOLTS**



**DO-214AC(SMA)**

**MAXIMUM RATINGS**

Characteristic	Symbol	HS11	HS12	HS13	HS14	HS15	Unit
Peak Repetitive Reverse Voltage Working Peak Reverse Voltage DC Blocking Voltage	$V_{RRM}$ $V_{RWM}$ $V_R$	50	100	200	300	400	V
RMS Reverse Voltage	$V_{R(RMS)}$	35	70	140	210	280	V
Average Rectifier Forward Current	$I_o$	1.0					A
Non-Repetitive Peak Surge Current ( Surge applied at rate load conditions halfwave, single phase, 60Hz )	$I_{FSM}$	25					A
Operating and Storage Junction Temperature Range	$T_J, T_{stg}$	- 65 to + 150					°C



DIM	MILLMETERS	
	MIN	MAX
A	2.20	2.80
B	4.10	4.70
C	1.30	1.70
D	4.60	5.30
E	1.90	2.50
F	---	1.30
G	---	0.22
H	0.85	1.45

**ELECTRICAL CHARACTERISTICS**

Characteristic	Symbol	HS11	HS12	HS13	HS14	HS15	Unit
Maximum Instantaneous Forward Voltage ( $I_F=1.0$ Amp, $T_C=25$ °C)	$V_F$	1.00		1.30			V
Maximum Instantaneous Reverse Current ( Rated DC Voltage, $T_C=25$ °C) ( Rated DC Voltage, $T_C=125$ °C)	$I_R$	5.0 50					uA
Reverse Recovery Time ( $I_F=0.5$ A, $I_R=1.0$ , $I_{rr}=0.25$ A )	$T_{rr}$	50			75		ns
Typical Junction Capacitance ( Reverse Voltage of 4 volts & f=1 MHz)	$C_P$	25			20		pF

CASE---  
Transfer molded  
plastic

POLARITY---  
Cathode indicated  
polarity band

# HS11 Thru HS15

FIG-1 TYPICAL FORWARD CHARACTERISTICS

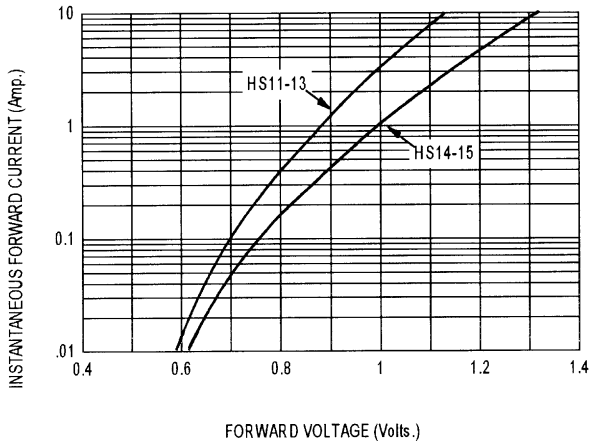


FIG-3 FORWARD CURRENT DERATING CURVE

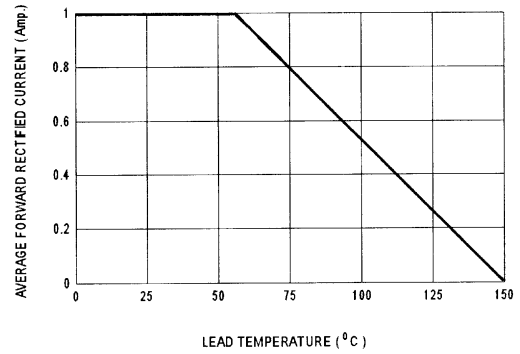


FIG-2 TYPICAL REVERSE CHARACTERISTICS

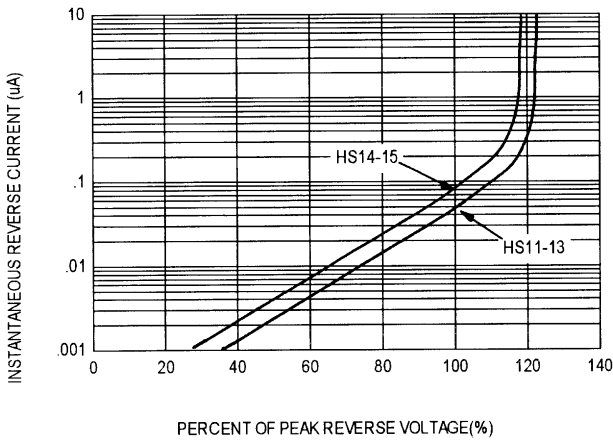


FIG-4 TYPICAL JUNCTION CAPACITANCE

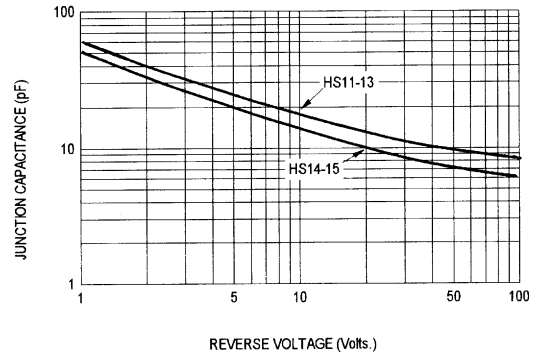
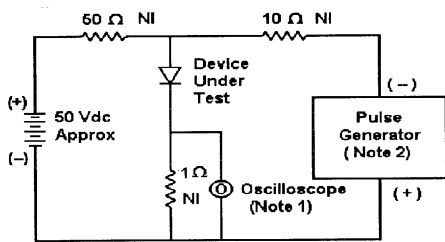
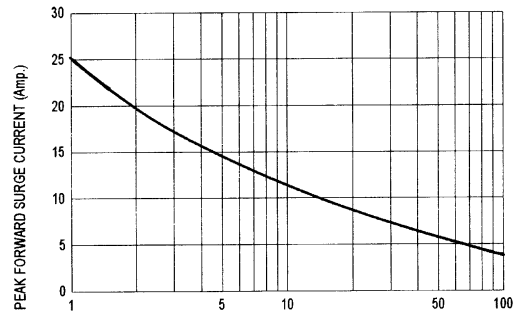
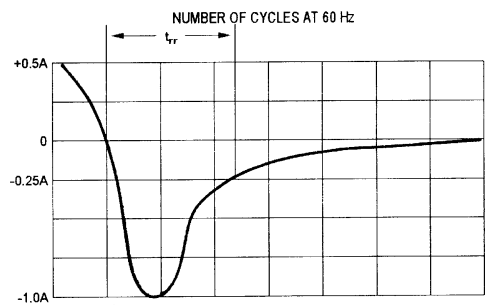


FIG-5 PEAK FORWARD SURGE CURRENT



- Notes:  
 1. Rise Time = 7 ns max. Input Impedance = 1 M Ω, 22 pF  
 2. Rise Time = 10 ns max. Input Impedance = 50 Ω



Set time base for 20 ns/cm

Fig-6 Reverse Recovery Time Characteristic and Test Circuit Diagram